

Engendering Disability-Inclusive Development – Genre, handicap et développement inclusif

EDID-GHDI

Annual Report 2020-21

EDID-GHDI Annual Report

Message from the Project Director

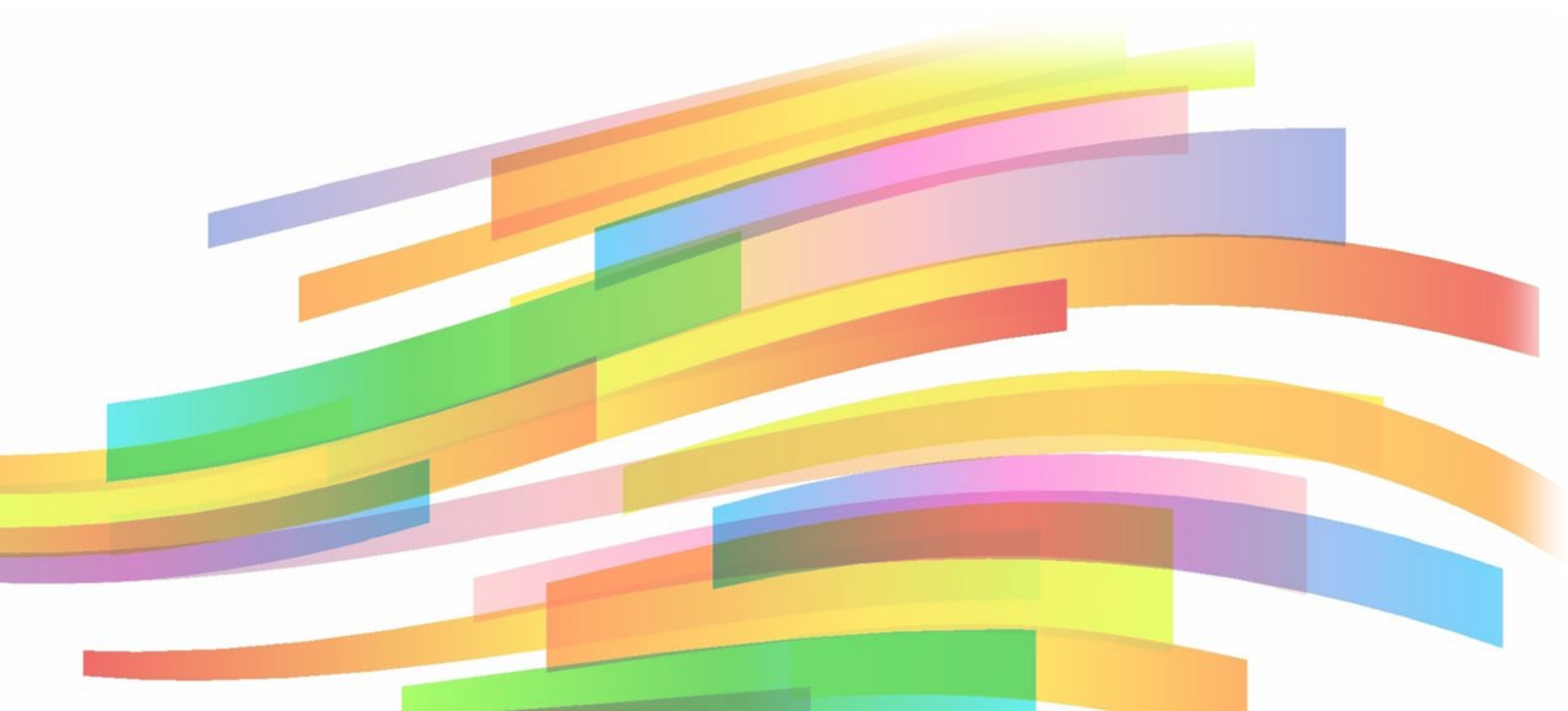
Welcome to the first EDID-GHDI Annual Report!

As Year 1 of our partnership draws to a close, I want to take this opportunity to acknowledge and celebrate the work and activities of the project so far. As this annual report describes, we have already learned a great deal through how-to sessions, team meetings, and through the development of research plans. We have also submitted EDID-GHDI's Milestone Report to our funder, which maps our path forward and includes key signposts to mark our progress.

I am grateful to have the opportunity to work with partners around the world towards the shared goal of disability inclusion and justice for girls and women. We have made a strong start on this journey together, and I'm excited to take our next steps together.

With hope and warmth,
Deborah

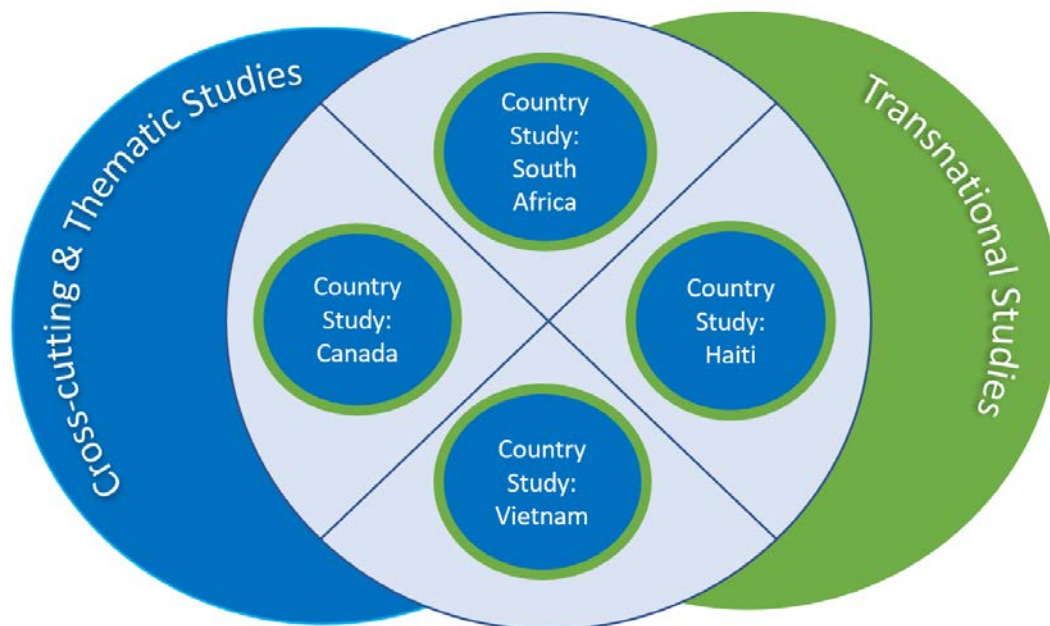
Deborah Stienstra
EDID-GHDI Project Director
University of Guelph



About the EDID-GHDI Project

The Engendering Disability-Inclusive Development – Genre, handicap et développement inclusif (EDID-GHDI) partnership is undertaking four country studies in Vietnam, Haiti, South Africa, and Canada. All four countries have committed to important international human rights treaties including the United Nations Convention on the Rights of Persons with Disabilities (CRPD).

The diversity in country studies allows us to explore women and girls' disability rights across geography, economy, and politics. Each country team includes local knowledge holders, including at least one disabled peoples' organization and one country-based researcher. The country studies use community-based research approaches to decide what to study and how to conduct the research, ranging from analyzing census data or policies, to conducting arts-based research. Later in the project, we will compare findings across countries.



EDID-GHDI at a glance: The graphic above shows the three streams of the project that foster collaboration with international partner organizations: 1. Cross-cutting and Thematic Studies; 2. Country Studies, and 3. Transnational Studies

EDID-GHDI Project and Partnership Goals

Project Goals

The Engendering Disability-Inclusive Development (EDID-GHDI) partnership builds relationships with civil society organizations, policy makers, and researchers to improve the lives of diverse girls and women with disabilities by:

- 1) uncovering, co-creating and mobilizing knowledge about their struggles for and progress toward disability-inclusive development
- 2) engendering and implementing disability-inclusive development policies that are critical to removing these barriers and creating the conditions for inclusion and participation.

EDID partners use **collaborative, engaging and interactive approaches with communities and individuals** to:

- Study gendered, disability and other experiences in four countries (South Africa, Vietnam, Haiti, and Canada) and internationally to contribute to education, research and practice about inclusive global development.
- Build and enhance mutual and inclusive relationships between researchers, students, disabled peoples' organizations (DPOs), development experts, and policy makers.
- Share knowledge among activists, researchers, and policy makers to better understand and address the challenges faced by diverse women and girls with disabilities.

Partnership Goals

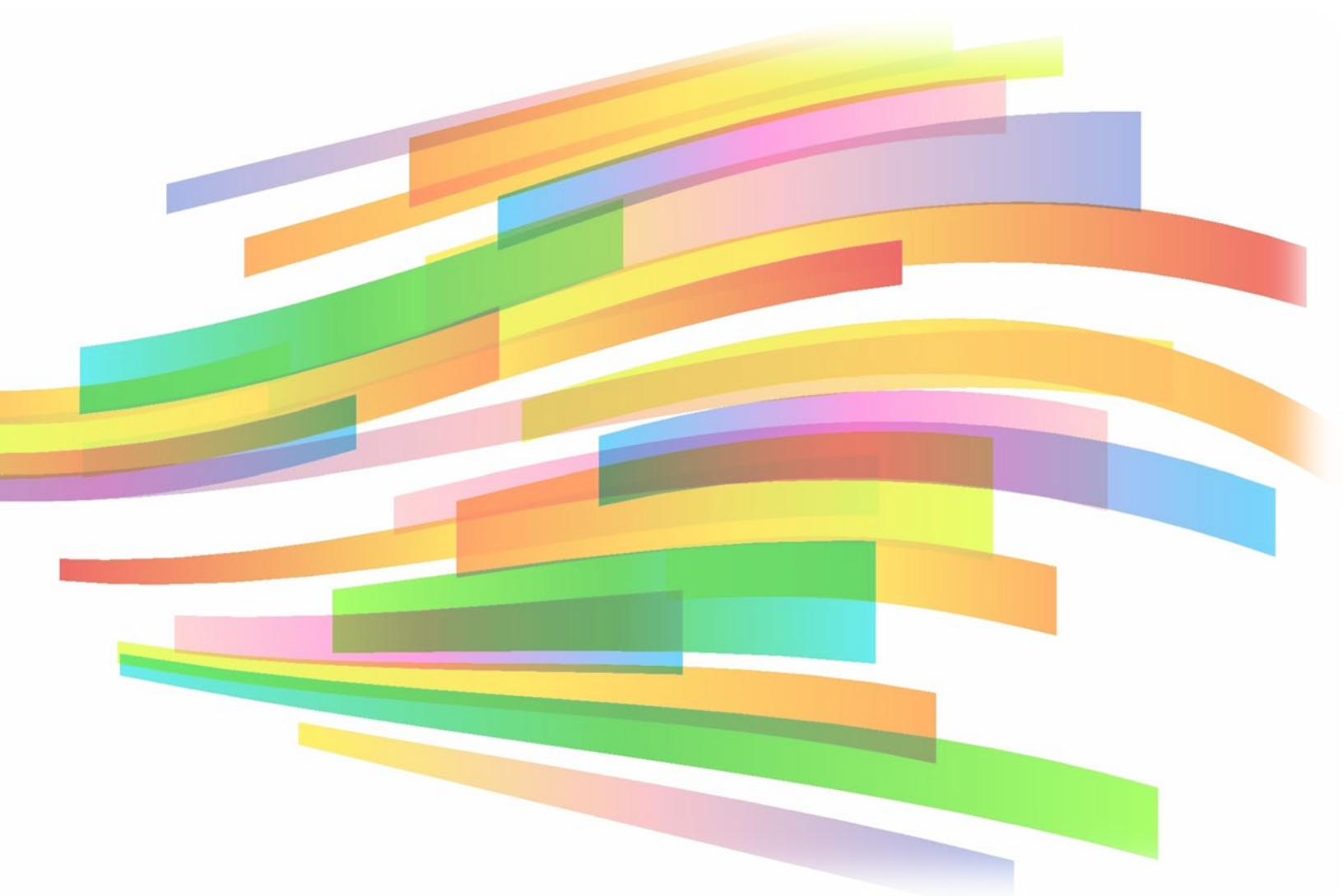
Our EDID-GHDI partnership goals are to:

- Foster an interconnected and engaged partnership
- Bring together research teams and the people they serve across the four country studies
- Learn with and from one another across the four country studies
- Build something positive together to meaningfully change the lives of women and girls living with disabilities

Braided Ribbons

We use strands of colourful ribbon as a symbol of our partnership. The ribbons represent different aspects of this team. This symbol was inspired by the two-row wampum belt of the Haudenosaunee people to record their peace and friendship treaty with settlers in what is now Canada. The different rows showed equality between the different groups and demonstrated a commitment to respect each other's way of living and how best to live together.

Each time we meet as EDID-GHDI, we will make our woven ribbon a little longer and stronger. The braided ribbons represent a long-lasting symbol of our commitments.



Study Partners

Country Study	Partners
Haiti	<ul style="list-style-type: none"> • Université d'État d'Haïti • Bureau du Secrétaire d'Etat à l'intégration des Personnes Handicapées (BSEIPH) • Réseau Associatif National Pour l'Intégration des Personnes Handicapées (RANIPH) • University of Ottawa
South Africa	<ul style="list-style-type: none"> • University of the Witwatersrand • South African Disability Alliance (SADA) • University of Winnipeg • Dalhousie University
Vietnam	<ul style="list-style-type: none"> • Hanoi Association of People with Disabilities (DP Hanoi) • Carleton University
Canada	<ul style="list-style-type: none"> • DisAbled Women's Network of Canada (DAWN) • Canadian Council on Rehabilitation & Work (CCRW) • British Columbia Aboriginal Network on Disability Society (BCANDS) • Realize • University of Guelph

Transnational & Cross-Cutting Study Partners
<ul style="list-style-type: none"> • Critical Institute • National Union of Women with Disabilities Uganda • Western Sydney University • Humanity and Inclusion Canada • Canadian National Institute for the Blind, World Blind Union • University of Ottawa • University of Guelph

Year 1 Highlights and Accomplishments

Country study teams develop research plans

In one of the most important steps forward for the EDID-GHDI project this year, each of the country study and transnational research groups developed research and knowledge mobilization plans to guide their next steps.

Vietnam will use a decolonial lens to examine the participation of women and girls with disabilities in mobilizing disability rights with a focus on gender equality and governance. The project seeks to identify systemic barriers to, and changes required for, participation of women and girls with disabilities using critical policy studies and participatory arts-based approaches.

Haiti will examine and seek to address inequalities affecting women and girls with disabilities at the level of policies and programs by conducting policy analysis and research and providing workshops on topics such as gender equality, education, employment, gender-based violence prevention, and electoral participation.

South Africa will pursue knowledge co-creation in three thematic areas: 1) Underrepresented groups of women and girls with disabilities; 2) Health, gender-based violence, and femicide; and 3) Education and training. Across phases, they will consider policy and governance and will regularly reflect on the research approach itself.

Canada will focus on understanding how diverse women and girls with disabilities meet their needs, achieve their dreams, and identify strategies to implement their dreams. The project will engage diverse women and girls as experts on the causes of their exclusion and facilitators to their inclusion.

The **transnational** team will track where women with disabilities have been involved in transnational events, identifying from where they speak, who they represent. This work will enable an understanding of the participation and representation of diverse women with disabilities in transnational arenas.

Learning Together with How-To Workshops and Live Q&A Sessions

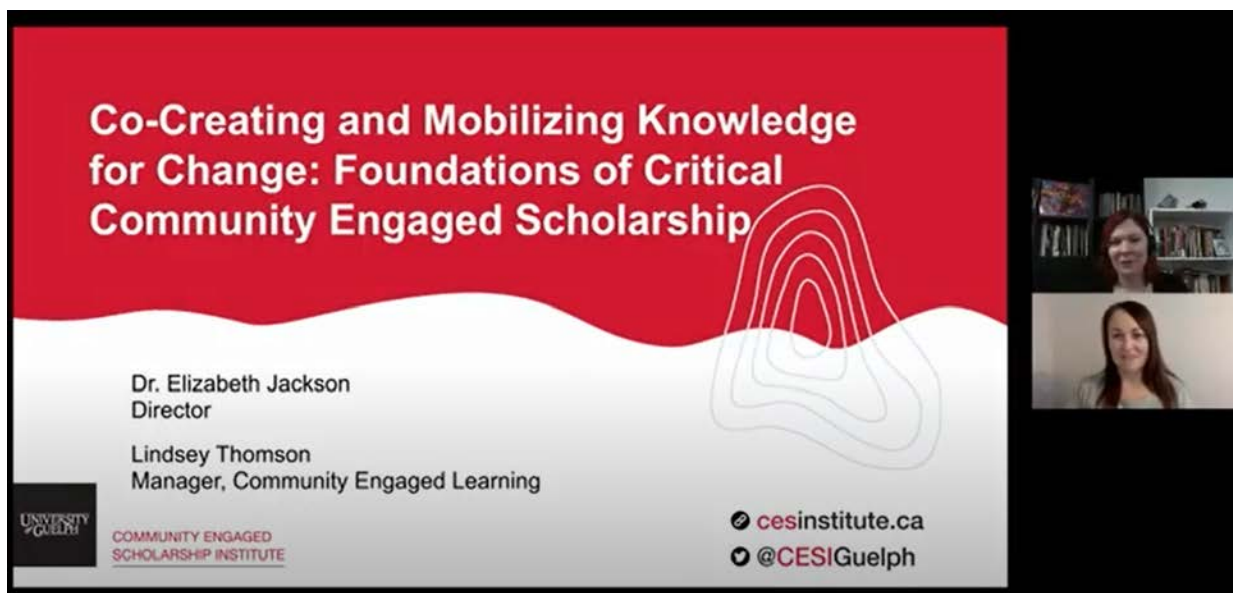
The EDID Partnership will host one to two “how-to” workshops every year, open to all collaborators and members. These workshops draw from the expertise of our partners and will address topics related to conducting collaborative, community-engaged, and transnational research.

In 2020-21, the Community Engaged Scholarship Institute led how-to workshops and live question-and-answer sessions on critical community engaged scholarship and integrated knowledge mobilization.

English and French versions of the videos and transcripts are available on YouTube:

[Foundations of Critical Community-Engaged Scholarship video](#)

[Co-cr  er et mobiliser les connaissances pour le changement video](#)



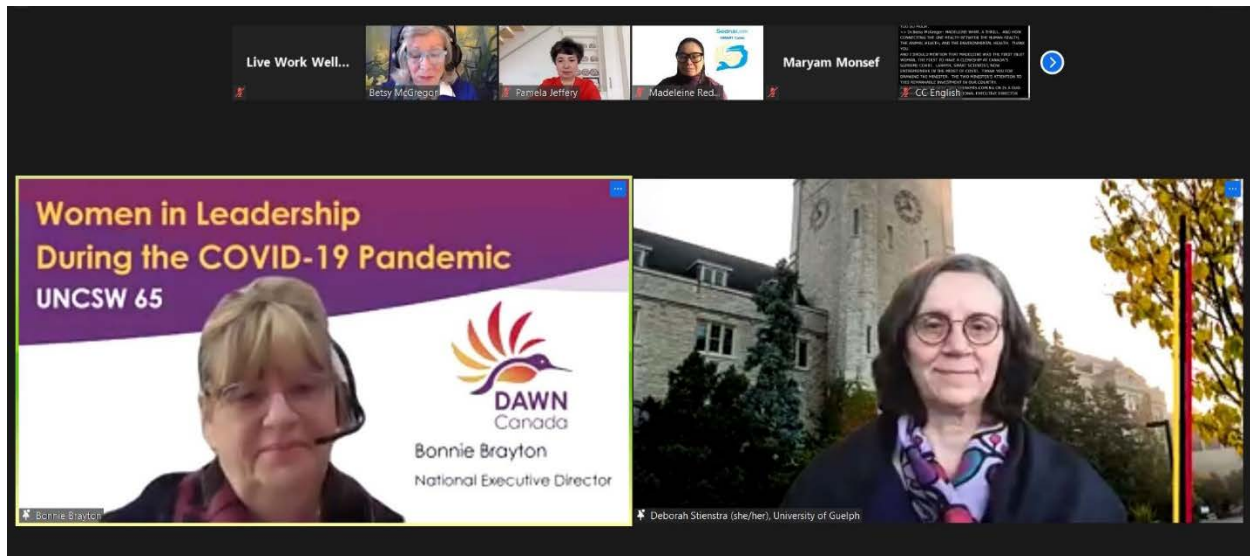
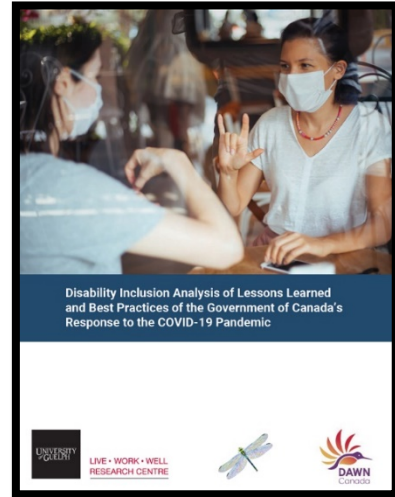
Making community-based research practices accessible: Community Engaged Scholarship Institute colleagues, Elizabeth Jackson and Lindsey Thomson, share their knowledge in 30-minute how-to videos in English and French now available on YouTube.

First EDID Thematic Study Exposes Impact of COVID-19 Policies on People with Disabilities

People with disabilities faced many additional barriers during the pandemic, often the result of government policies that failed to consider their needs.

The first thematic study of the EDID project, *Disability Inclusion Analysis of Lessons Learned and Best Practices of the Government of Canada's Response to the COVID-19 Pandemic* describes the experiences of diverse people with disabilities in Canada during the pandemic and shares good practices from around the world.

Read the final report and fact sheets on the [Live Work Well website](#), and stay tuned for a launch event!



Sharing EDID thematic study findings with the UN: Deborah Stienstra and Bonnie Brayton presented the findings of the *Disability Inclusion Analysis* report at a side-event of the 65th Session of the United Nations Commission on the Status of Women hosted by Maryam Monsef, Canada's Minister for Women and Gender Equality and Rural Economic Development. The presentation was part of an event titled "Women's Leadership during the COVID-19 Pandemic."

Milestone Report Sets Goals and Plans for Next Steps

The EDID-GHDI Milestone report was submitted to our project funder, SSHRC (Social Sciences and Humanities Research Council) in April 2021. The report will serve as a roadmap for the project. In the report, the leadership team has set targets for our progress and deliverables that SSHRC will measure us by at the midterm point of the project (October 2023).

With the COVID-19 pandemic looming large, the Milestone Report provided us with an opportunity to revisit our plans and make necessary adjustments to timelines and outputs based on our new reality. The report includes our plans for research, knowledge mobilization, training and mentorship, governance, and partner engagement.

Where we aim to be by 2023:

- **Research Activities:** Country, thematic and transnational studies will be well-underway by October 2023. Project workplans for the Research, Relationships and Knowledge Mobilization (KMb) Hubs have been adapted for our pandemic reality. Country and transnational study teams created research, KMb and evaluation plans. One thematic study has been completed (refer to page 8). A developmental evaluation framework will assess overall and interrelated project activities.
- **Knowledge Mobilization:** Presentations, publications and other knowledge mobilization (KMb) products will begin early and start to increase by the project midpoint. The partnership will create a variety of information tools to reach a range of audiences such as researchers, disability organizations, students, policy makers, other partners and the general public.
- **Training and Mentoring:** Eighteen students (undergraduate, master's and doctoral) will participate in the project by 2023. Although student involvement among partners began slowly because of pandemic adaptation delays, project teams will have the full involvement of students as planned. Additional SSHRC pandemic funds have enhanced our capacity.
- **Governance:** We continue to use ongoing open communication, proactive brainstorming, collaborative problem-solving, and trust to work through the challenges of the COVID-19 pandemic and achieve shared goals.
- **Partner Engagement:** Through the Relationships Hub and KMb activities, members of disabled persons' organizations (DPOs) and diverse women and girls with disabilities are included and their knowledges and experiences are

centred. For example, project research questions, methods, findings and KMB products are practical, relevant and reflect their knowledges and experiences.

The Year Ahead

As we enter the second year of our partnership, we are gaining momentum with meetings and activities. Here are some highlights:

- Country studies will refine their plans and begin data collection
- Transnational research gets underway
- Planning begins for the first partnership team meeting in Vietnam with an online backup option (June 2022)
- Disability Partners' Caucus meetings continue up to three times a year
- Planning begins for the Canada Policy Forum (to be held in 2022)

The Big Picture

Here's a snapshot of meetings and activities over the course of the project:

- **Partnership Team Meetings:** Vietnam or online (June 2022), South Africa (2024-25), and Canada (2026-27)
- **Regular Disability Partners' Caucus meetings:** Up to three times a year
- **Policy Forums:** Canada (2022), Vietnam (June 2022), Haiti (2024), and South Africa (2024-25)
- **International Feminist Disability Coalition conference:** Canada (April 2023)
- **Early Career Researchers' Conference and Research Roundtable:** Canada (June 2023), South Africa (2024-25), and virtually (June 2025)
- **Capstone International Research Conference:** Canada (2026-27)

Website: www.edid-ghdi.ca

The EDID website is under construction! Once it is completed, you will find information there about the project, collaborators, the Research, Knowledge Mobilization, and Partnerships Hubs. The website will also include research summaries and other knowledge related to gender and disability-inclusive development. You will also be able to stay up to date with the latest news and upcoming events.

We Want to Hear from You!

Let us know your ideas for how we should keep in touch, such as email, letters, postcards, pictures, video clips, audio clips, and more. Also, please share what is working best for you. Your comments, concerns and questions are always welcome.

Here is how you can get in touch with us:

Email: edid-ghdi@uoguelph.ca

Follow us on Twitter: [@edid_ghdi](https://twitter.com/edid_ghdi)

Postal mail: Live Work Well Research Centre, University of Guelph

Attention: EDID-GHDI

501 MacKinnon Building, 50 Stone Rd E, Guelph, Ontario, Canada N1G 2W1

Project Support

EDID-GHDI is supported by a Partnership Grant from the Social Sciences and Humanities Research Council (2020-27) and by contributions from our project partners.



Social Sciences and Humanities
Research Council of Canada

Conseil de recherches en
sciences humaines du Canada

Canada

